

## PREMISES

### Ground Floor:

North Retail 11,942 SF

South Retail 3,357 SF

### Basement:

Space A: 1,219 SF

Space C: 1,019 SF

Space D: 2,685 SF

Space F: 424 SF

## CEILING HEIGHTS

North Retail Ground: 16' 3" – 18' 3"

South Retail Ground: 15'

Basement: 10' 6"

## FRONTAGE

### North Retail:

64' on Hudson St

154' on Charlton St

### South Retail:

64' on Hudson St

50' on Vandam St

## POSSESSION

Immediate

## TERM

Long-term

## DIVISIONS

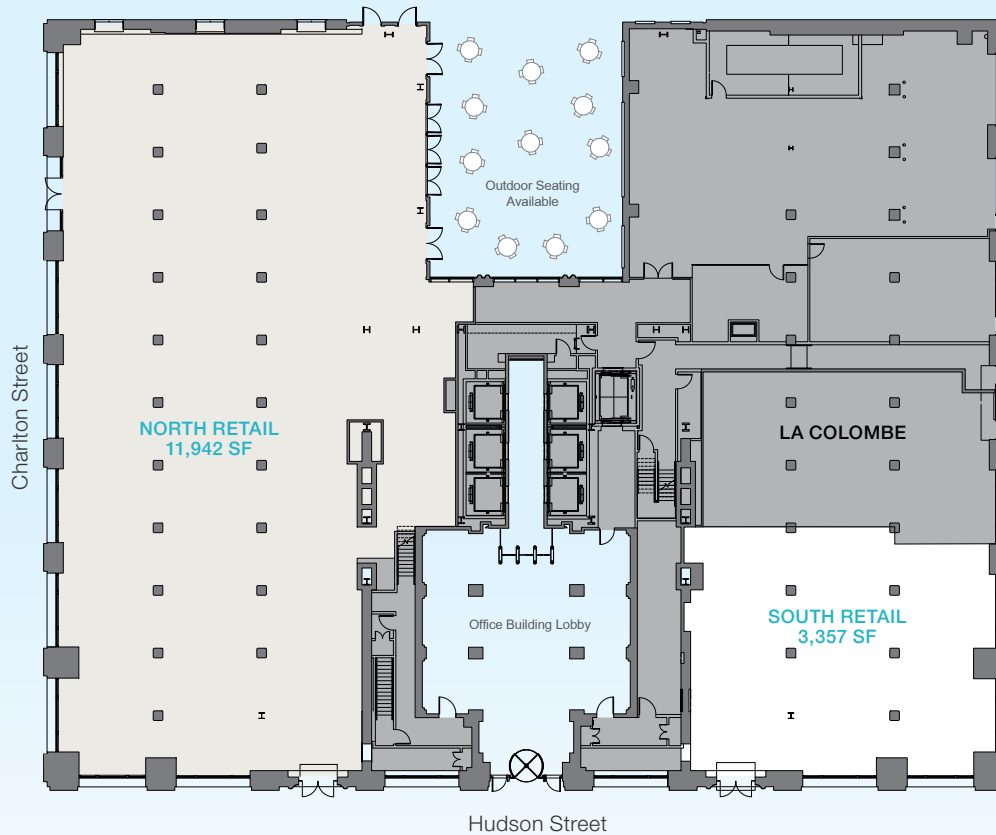
Logical Divisions Considered

## ASKING RENT

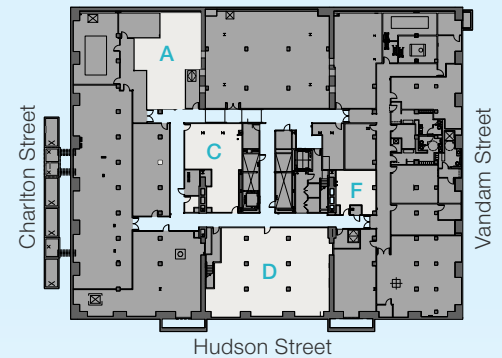
Upon Request



## Ground Floor



## Basement



Exclusive Leasing Agent:



DAVID LAPIERRE  
212.984.6590  
david.lapierre@cbre.com

STEPHEN SJURSET  
212.984.7105  
stephen.sjurset@cbre.com

CASSIE DURAND  
212.984.6528  
cassie.durand@cbre.com

SEAN MORAN  
212.984.6629  
sean.moran@cbre.com

Ownership:  
A Strategic Partnership of:



CALLAHAN  
CAPITAL  
PROPERTIES



An Affiliate of:

BEACON CAPITAL  
PARTNERS

The information above has been obtained from sources believed reliable. While we do not doubt its accuracy, we have not verified it and make no guarantee, warranty or representation about it. It is your responsibility to independently confirm its accuracy and completeness. Any projections, opinions, assumptions or estimates used are for example only and do not represent the current or future performance of the property. The value of this transaction to you depends on tax and other factors, which should be evaluated by your tax, financial and legal advisors. You and your advisors should conduct a careful, independent investigation of the property to determine to your satisfaction the suitability of the property for your needs.

Creative Development: Sun & Moon Marketing Photography: Jon Ortner